

Performance data for Flintshire Youth Service April 2023–March 2024



ANNUAL OVERVIEW

During the financial year, April 2023 to March 2024, the projects within Youth Service engaged with **1,006** young people within Flintshire. In December, it was reported that 848 young people had been engaging and in the last quarter another **158** young people have been registered and participated in support from our projects.

The funnel charts to the right show cumulative figures for each project throughout the year and highlights which areas need support to encourage better participation from our Flintshire young people and/or more of a focus to advertise what we can offer.

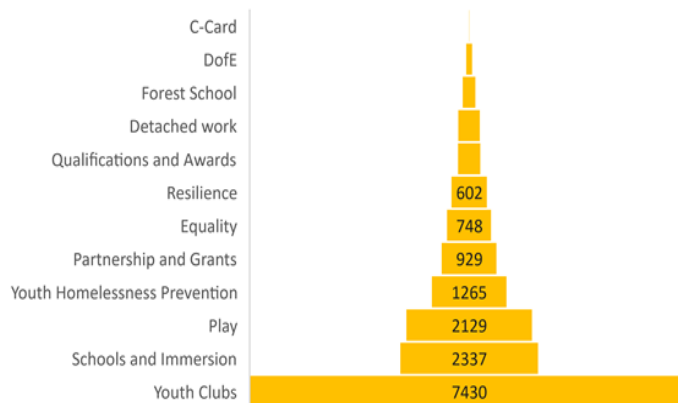
Upshot shows that our YP have participated in 16,513 attendances within the 1,843 sessions delivered across the projects, mounting up to a total of 32,952 contact hours between our Youth Workers and Young People.

Whilst completing the reporting, it additionally highlighted a few areas that need further training or correction to ensure better reporting in future.

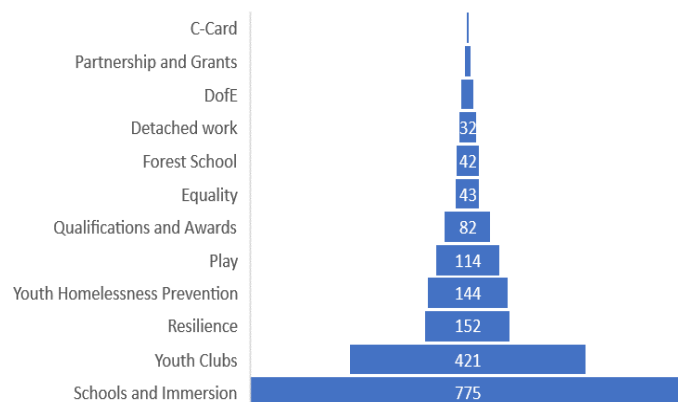
The key areas include:

- Ensuring all the information collated for young people is input correctly and consistently.
- Additional training to reduce any duplication and to record staff attendances at sessions as well.
- Review of where activities are being created and sessions are recorded.

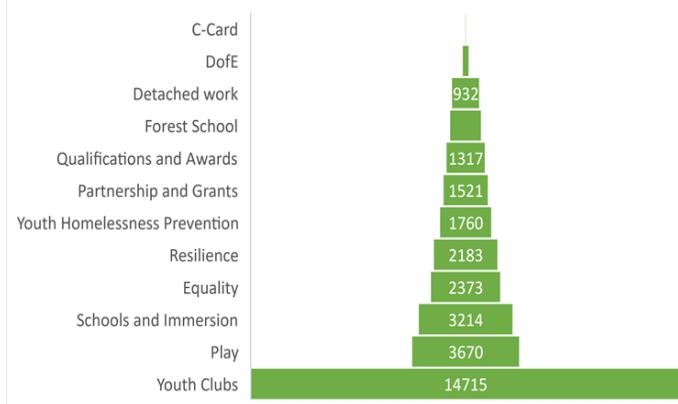
Cumulative Attendances within Projects (Total: 16,513)



Cumulative Sessions Delivered



Cumulative Contact Hours (Total: 32,952)



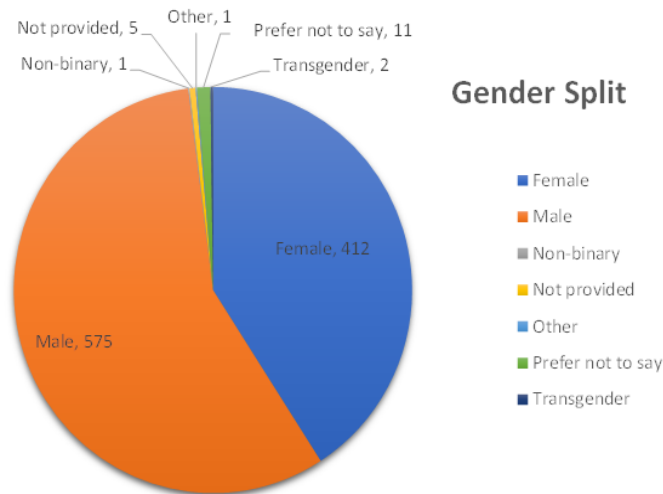
YOUNG PEOPLE DATA

Predominantly, our service is continuing to cater to mostly young males and those who are around the age of 15. As you can see from the pie chart to the right, most of our young people have shared their gender with us but there is still a small amount who have preferred not to disclose this.

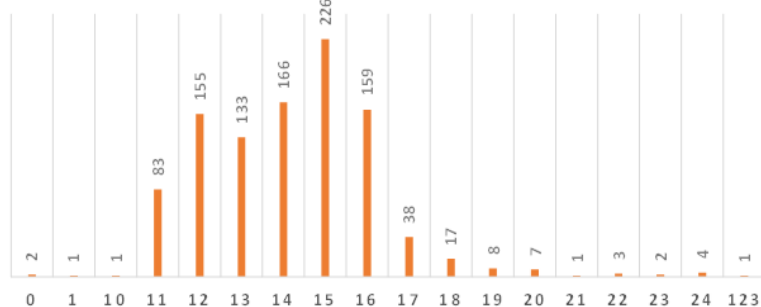
The service's targeted audience is mainly those between the ages of 12 to 16. According to the ethnicity data that we have collected so far, we are not attracting many from other ethnic backgrounds and there is still a big gap in the recording of this sensitive data.

Location reporting is still showing Flint as the hometown of majority of our young people, however looking at the pie chart below, the young people are higher in the areas that we are working within and have more provision being offered.

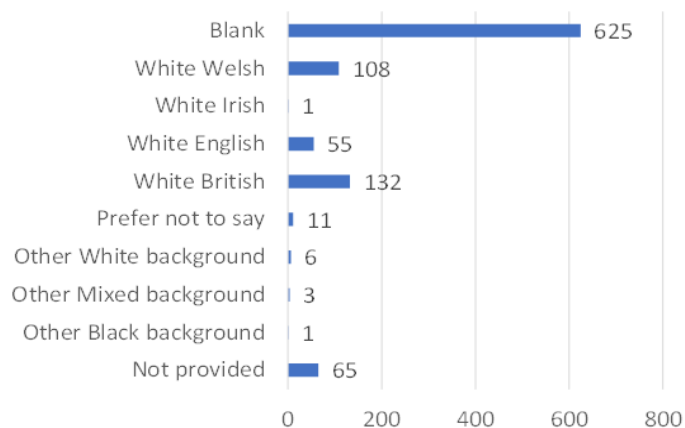
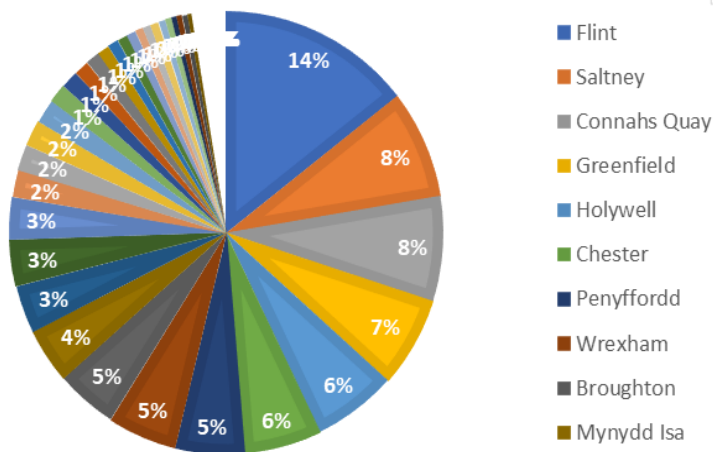
Further separation of the locations of our YPs are shown in a column graph on the following page.



TOTAL YP AGE



PERCENTAGE OF YPS & THEIR LOCATION

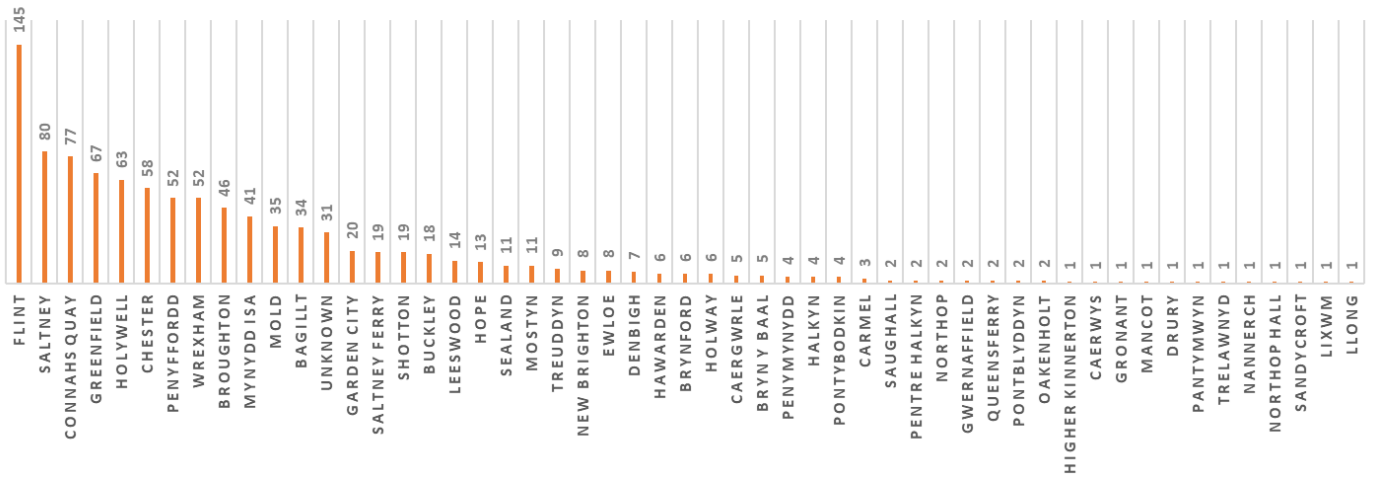


ISSUES WITH YP DATA RECORDED

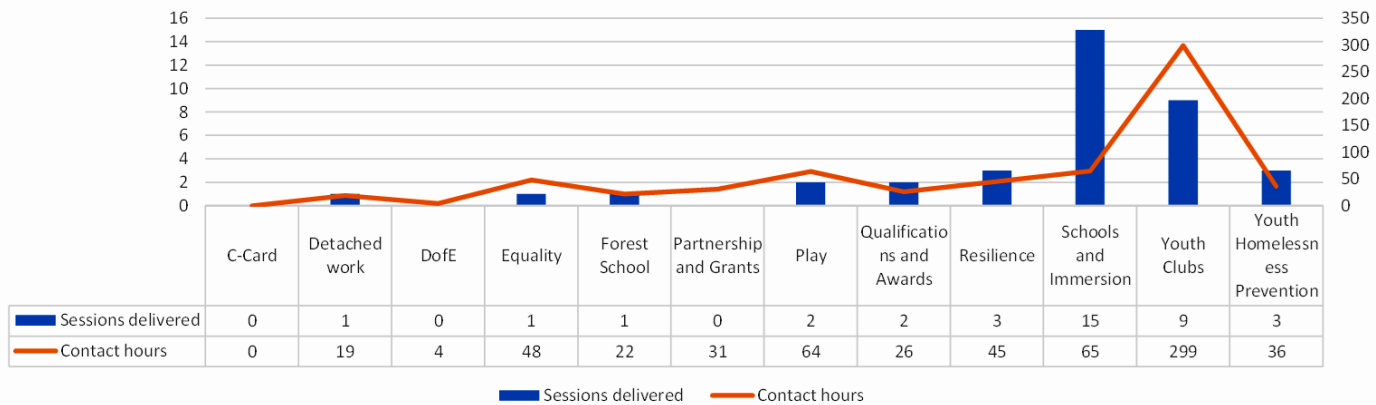
1028 young people were showing on my initial report.

- Further analysis showed that 16 (possibly 17) were duplicated YPs.
- An additional 6 were YW staff who had been recorded incorrectly as participants during sessions.
- Information not being collated re: ethnicity and gender.
 - 625 without ethnicity
 - 5 have not provided their gender.
- 5 YPs are showing as having incorrect DOBs.
- Home addresses not being recorded consistently. Incorrect spelling of towns or details being recorded in the wrong boxes causes a delay in reporting off the system.
- 3% of our young people do not have an address attached to them so have been reported as “unknown”. This equvalates to 31 young people out of our 1006.
- Disabilities are being recorded in various ways due to multiple boxes so further work to be undertaken to tidy this up.

YP REGISTERED LOCATIONS



Weekly Averages: Sessions vs Contact Hours



Monthly Average of Participation at Youth Clubs

